

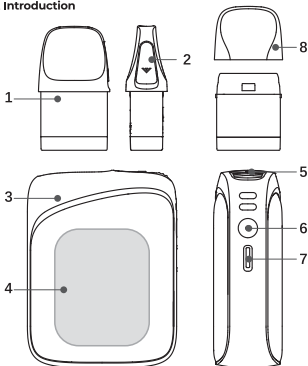
UWELL CALIBURN

User Manual

UWELL CALIBURN G4 PRO KOKO Pod System

©2025 By SHENZHEN UWELL TECHNOLOGY CO., LTD.
All Rights Reserved.

1. Product Introduction

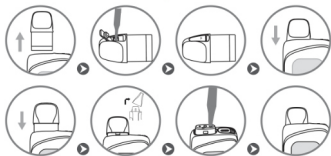


- | | | |
|---------------------|-----------------------------|--------------|
| 1. Cartridge | 2. Filler plug | 3. Main unit |
| 4. Touch screen | 5. Airflow adjustment value | 6. Button |
| 7. Type-C interface | 8. Mouthpiece | |

2. Product Specification

Main material	PCTG, aluminum alloy	Capacity	3.0ml/2.0ml
Dimension	85.8*50*23mm (FDA, INT)	Maximum output power	35W
	82.7*50*23mm (TPD, CRC)	Cartridge specification	0.4Ω/0.6Ω/0.9Ω
Net weight	Approximately 93g	Cell capacity	2000 mAh

3. Filling



Precautions:

- Insert the drip tip of the bottle into the filling slot before filling.
- After filling, immediately put the filler plug (or mouthpiece) back on to prevent leakage.
- When the remaining e-liquid in the cartridge is below the "MIN" level, please refill in time.
- After filling a new cartridge for the first time, please let it stand for 10 minutes before use to prevent damages to the pod caused by operation without e-liquids.

4. Home screen quick actions

Swipe up to unlock swipe left / right to switch between themes, pull down to enter menu.

4.1 Screen locking / unlocking

Swipe up on the screen to unlock. Press the power button once or remain inactive for 3 seconds (user-definable, 3s by default), to lock and turn off the screen.

4.2 Theme switching

On the home screen, swipe left / right to switch between themes.

4.3 Mode switching

Tap on WAVES / STORM / CUSTOMIZE to switch between modes (in CUSTOMIZE mode, swipe up / down to adjust points and set the output mode). Click "√" to finish.

4.4 Power adjustment

Click the power display area to enter the power adjustment interface. Swipe up / down to adjust the power. Click "√" to confirm.

4.5 Puff counter reset

Click the puff count display area to enter the puff counter reset interface. Click the button "reset current puff count" to finish.

5. Menu settings

5.1 Screen Display

Click the icon "Screen Display" to enter the brightness and screen-on time adjustment interface. Swipe to adjust the screen brightness and screen-on time. Click "√" to confirm.

5.2 Animation

Click the icon "Animation" to enter the animation setting. Click "ON / OFF" to turn on / off the puff and screen-off animations.

5.3 Battery Saver

Click the icon "Battery Saver" and click "ON / OFF" to turn on / off the power saving mode. In the power saving mode, the screen brightness will be set to the lowest, the screen-on time will be 3 seconds, and the puff animation will be turned off.

5.4 Clean UI

- Click the icon "CLEAN UI" to enter the clean mode switch interface. Click "ON / OFF" to turn on / off the clean mode.
- In clean mode, click the custom text area (Uwell Since 2015 by default) to edit the text.

5.5 Language

Call up the main menu and click the icon "Language" to enter the selection interface. Click "√" to confirm.

5.6 System Reset

Call up the main menu and click the icon "System Reset" to enter the system reset interface. Click "√" to restore factory settings.

6. Protection and Prompt

- Short circuit protection:** When a short circuit occurs, the screen will display "ATOMIZER SHORT-CIRCUIT", the device will stop outputting.
- Low voltage protection:** When the battery is low, the screen will display "LOW BATTERY", the device will stop outputting.
- Over-time protection:** If a puff lasts more than 6 seconds, the screen will display "OVER 6S" and the device will stop outputting.
- Open circuit prompt:** When the cartridge is disconnected from the device or there is no cartridge, the screen will display "NO ATOMIZER".

Warm Reminder

- Please use a high-quality power adapter (5V/2A) and USB cable that have passed safety certification for charging.
- If you carry this product on a plane, please remove the cartridge from the device and pack it separately to prevent leakage due to changes in aircraft pressure.
- Avoid high temperature, flammable and explosive articles, low temperature, water, and humid environment during use and storage. Do not store it with hard objects during transportation to prevent damage to the device. It is recommended to charge the device at least once a month to extend its life time.
- Do not use this device in a strong static electricity environment.

WARNING

The new FDA regulations apply to the sales and distribution of all E-cig products.

1. Do not give away free samples.
2. It is prohibited to sell all types of E-cig products to people under the age of 21.
3. It is prohibited to sell all types of E-cig products in vending machines except those specified by laws and regulations.
4. It is prohibited to introduce products with "light", "low", "mild", or other similar descriptions in labels or advertisements into interstate trade.
5. It is strictly forbidden to be used by young children, pregnant women, and women during breastfeeding or patients with heart disease, hypertension, diabetes, depression, and asthma. Keep the product out of the reach of children, non-smokers, and animals.
6. Please do not drink it.
7. It may contain nicotine, which is known to be a highly addictive substance.
8. Swallowing or skin contact with this product may cause intoxication.
9. Please keep away from flammables and explosives when using or charging to avoid hazards.
10. Do not disassemble the product. The company won't be responsible for any product damage or personal injury caused by the improper operation.
11. Please consult your local vape shop or contact us through service@myuwell.com if you need help using the product.

WARNING

1. This product is only for people who have reached the legal smoking age. It is strictly forbidden to be used by young children, pregnant women, and women during breastfeeding or patients with heart disease, hypertension, diabetes, depression, and asthma. Keep the product out of the reach of children, non-smokers, and animals.
2. This product is suitable for various concentrations of e-liquid. If you directly contact e-liquid when using this product, please clean your hands and forearms thoroughly. If your eyes directly contact the e-liquid, please rinse your eyes with clean water and seek medical attention immediately. If you swallow the e-liquid, rinse your mouth and seek medical attention immediately. Please take the liquid container or label with you when you seek medical attention.
3. The product may contain nicotine, which is known to be a highly addictive substance.
4. Please keep away from flammables and explosives when using or charging to avoid hazards.
5. Do not disassemble the product. The company won't be responsible for any product damage or personal injury caused by the improper operation.

This product is in compliance with the following:

- Electromagnetic Compatibility Directive 2014/30/EU
- Restriction of Hazardous Substances Directive 2011/65/EU
- The Tobacco Products Directive (2014/40/EU)

Battery Recycling:

The product's battery should be collected and sent to related recycling center.

This product complies with TPD and MHRA. For any questions about TPD and MHRA, please check the ECID number on the following website:

https://cms.mhra.gov.uk/ecig?f%5B0%5D=ecig_brand_taxonomy_term_name%3AUWELL&page=0

Product Verification

- Visit UWELL's official website www.myuwell.com to verify under the SUPPORT navigation bar.
- Please scan the QR code on the package with your phone camera to verify. The result will be displayed on the page.
- Or you can enter the 16-bit anti-counterfeit code on the surface of the user manual into the input box, and the result will be displayed within seconds.

Attention:

Please keep your package and the warranty card.

Warranty Period

180 days from the purchasing date.

Warranty Parts

Device and atomizer only. Coil and pod are excluded.

Warranty Service Excluded Conditions

1. Expiration of warranty period.
2. Damage caused by failure to use, maintain and keep the product according to the requirements of the product instructions.
3. Damage caused by maintenance service personnel non-authorized by UWELL.
4. Damage caused by using inferior accessories of other brands.
5. Damage caused by the force majeure.

Warranty Service Guide

1. You can ask the shop you purchased your vaping device for the warranty service.
2. You can visit www.myuwell.com and ask for warranty service under the SUPPORT navigation bar.
3. You can contact us through aftersales@myuwell.com if you have any questions.

Please use your phone camera to scan the QR code for further information.

